

BORA



PORTLAND PUBLIC SCHOOLS

Ida B. Wells High School

CPC Meeting #2
October 25, 2023

after BRUCE
public relations & marketing

WALKER | MACY **kpff**

AGENDA

Introductions 00:15

Vision & Goals 00:45

What is a modernization?

What we heard from CPC #1

Exercise

Site Opportunities + Context 00:45

Site Analysis Review

Exercise

Education Specification Review 00:10

Next Steps 00:05

Schedule

Team Members



Amy Donohue
Bora



Amy Running
Bora



Stefée Knudsen
Bora



Becca Cavell
Bora



Keevin Collier
Bora



Amelie Reynaud
Bora



Matt Noyes
Walker Macy



Danielle Pruett
KPFF



Thy Daniels
After Bruce



Mireaya Medina
After Bruce



Erik Gerding
PPS



Hector Lopez
PPS

Vision + Goals



WHAT IS A MODERNIZATION?

There are three common types of building projects that could fall into the modernization category

- Building remodeling
- Remodeled + addition to the building
- New construction



WHAT IS A MODERNIZATION?

Recent school modernization projects have included renovation + addition or new construction:

- Lincoln High School (new construction)
- Franklin High School (remodeled + addition)
- Kellogg Middle School (new construction)
- McDaniel High School (remodeled + addition)



MODERNIZATION

All modernization projects include:

- Updated heating/cooling systems

- Seismic upgrades + code required seismic design

- Technology upgrades

- Improved safety considerations

- New furniture and equipment throughout

- Mechanical, electrical and plumbing systems upgrades

- Lighting Improvements for energy efficiency and longevity

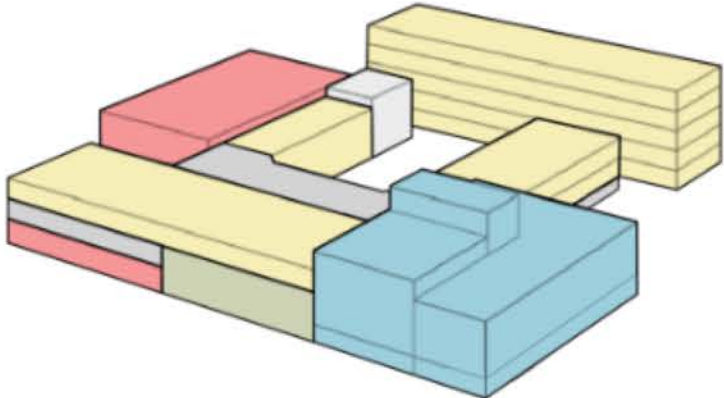
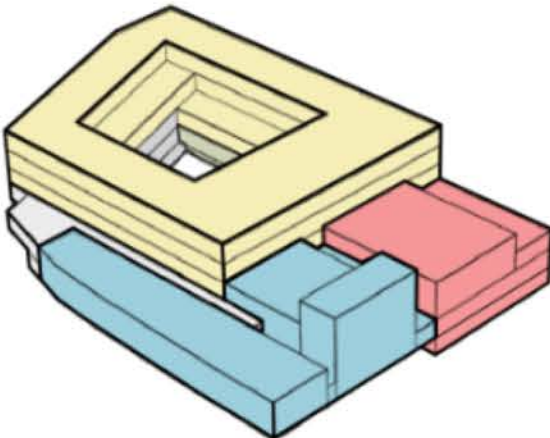
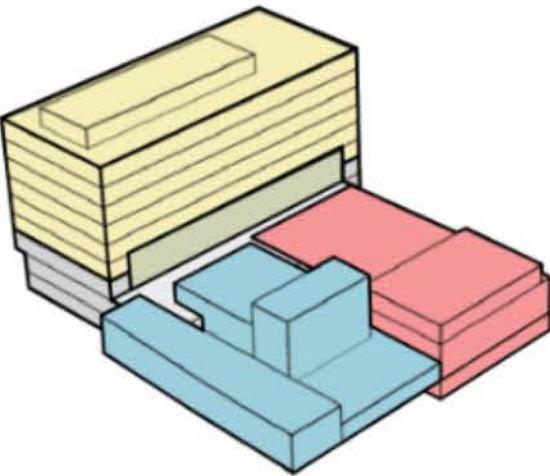
- Upgrade athletic facilities

CPC PROCESS

1. Understand **constraints and opportunities**
2. Understand the main **values and goals** that make this project special
3. Determine a direction how the building will **fit on the site** and where
4. Create a massing **concept design** that fits all the pieces
5. Establish a **reasonable budget** for the project moving forward

CPC PROCESS

Lincoln High School design options [early Conceptual Design]

	RENOVATION + ADDITION		FULL REPLACEMENT	
	Wrapper		Horizontal	Vertical
Site - Building Location				
Height	5 Stories		5 Stories	9 Stories
Potential Challenges	Inefficient use of land, Swing Site costs		Structural and acoustical issues	Deep foundations

CPC PROCESS



Conceptual Design



Schematic Design



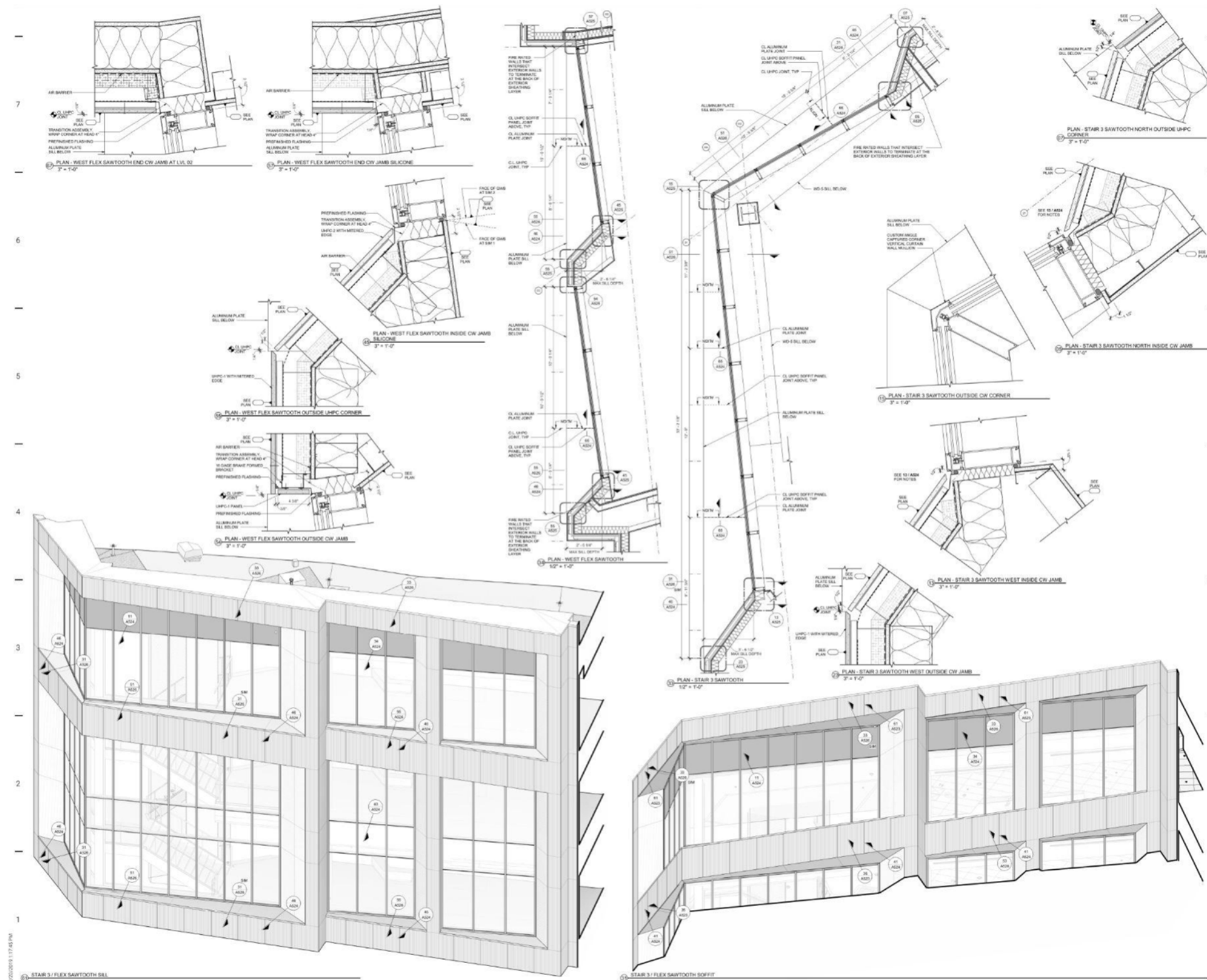
Design Development



Construction Documents

CPC PROCESS

Construction Design Phase



VIEW FROM SALMON OF ENTRY



VIEW FROM SW 18TH LOOKING SOUTH



VIEW FROM SW 17TH LOOKING NORTH



VIEW FROM MAC CLUB LOOKING EAST



VIEW FROM FIELD LOOKING WEST



VIEW FROM MAIN STREET

WHAT WE HEARD: HUMAN EXPERIENCE

The new Ida B Wells High School will be successful if the result is:

An inviting building that evokes pride and respect

A school that inspires students to learn

An anchor for the community where students will thrive for generations to come

A flexible, forward-thinking design to meet future needs

WHAT WE HEARD: COMMUNITY HEALTH, SAFETY AND BELONGING

The new Ida B Wells High School will be successful if the result is:

A healthy, supportive space for students, teachers and staff

An inclusive space where all students feel a sense of belonging

A safe place for learning

A place where teachers feel appreciated and respected

A place integrated with the neighborhood businesses

A place that recognizes indigenous culture and people

WHAT WE HEARD: SITE DESIGN

The new Ida B Wells High School will be successful if the result is:

A landscape plan that considers 10-50yr design

A design that improves and adds (not subtracts) from the site

A site that is welcoming and supporting to a diverse set of students

A purposeful gathering space for neighborhood special events

A strong sports facility for students & local sports organizations

WHAT WE HEARD: BUILDING DESIGN

The new Ida B Wells High School will be successful if the result is:

A beautiful and timeless design for the neighborhood

A school that supports learning styles of every kind.

A visually interesting place with varied environments to support different group sizes

A seismically safe building

WHAT WE HEARD: BUILDING DESIGN

The new Ida B Wells High School will be successful if the result is:

A performing arts venue with excellent acoustics

A comfortable place with heating and cooling

An increase in space for students (library, flex spaces, counseling office, career center)

A space for community partners.

A place that considers technology & AI for the future

WHAT WE HEARD: SUSTAINABILITY + HEALTH

The new Ida B Wells High School will be successful if the result is:

Built to last for the next 100 years

A model example of the district's climate policy

A school with healthy air, water, materials and light to support wellness

A place equipped for emergency preparedness

WHAT WE HEARD: FINANCIAL + ENROLLMENT

The new Ida B Wells High School will be successful if the result is:

A project on budget and on time while meeting the needs of students + community.

An increase in enrollment post-construction

An increase in staff retention and graduation rates

A process with transparency of costs and trade-off debates

WHAT WE HEARD: PROCESS

The new Ida B Wells High School will be successful if the result is:

A design that capitalizes on lessons learned from previous schools
and its students

A process where voices of community are meaningfully included

WHAT WE HEARD: WHAT IS MISSING?

The new Ida B Wells High School will be successful if the result is:

?????

WHAT WE HEARD

Events/Ideas for Outreach

- E-newsletter that can be sent out
- Online polls to identify preferences
- Information posters
- Sub-Reddit thread for ideas
- Participate in SW trails hike
- Farmers Market-Hillsdale
- Tours of the current IBW
- Pancake breakfast
- Article in neighborhood flyers
-
- Guardian Showcase Dec. 5th
- Door to door knocking
- Listening sessions at Mult Co. Library
- Info table at grocery stores
- Meal incentives/childcare
- Surveys available in several languages
- Forums (online and in person)
- Student assembly

WHAT WE HEARD

Possible Partner Organizations

PSU Native American Student Community Center

Hillsdale Business Association

Habitat for Humanity

Foothills Soccer Club

Cluster elementary & middle schools (PTA)

Positive Change PDX

Jewish Community Center

Hillsdale Alliance

Local Mosque

Youth organizations

Multnomah County Library



THE NEGRO FELLOWSHIP LEAGUE

The Negro Fellowship League will hold a meeting of delegates September 17, 1916, at 4:00 p.m. in the Reading Room, 3005 St. Louis Ave. The meeting is for the purpose of electing delegates to attend the National Negro Rights Congress to be held in Washington City the first week in October. Mr. Wm. Monroe Trotter, of Boston, who is secretary of the same, has specially urged that Chicago send a delegation. He has also urged that Chicago send a delegation in this vital matter.

The meeting last night was of great interest. It was called to order by the following Recommendations

Dr. Ida B. Wells

The Alpha Suffrage Record

Chicago, Ill. March 18 1914

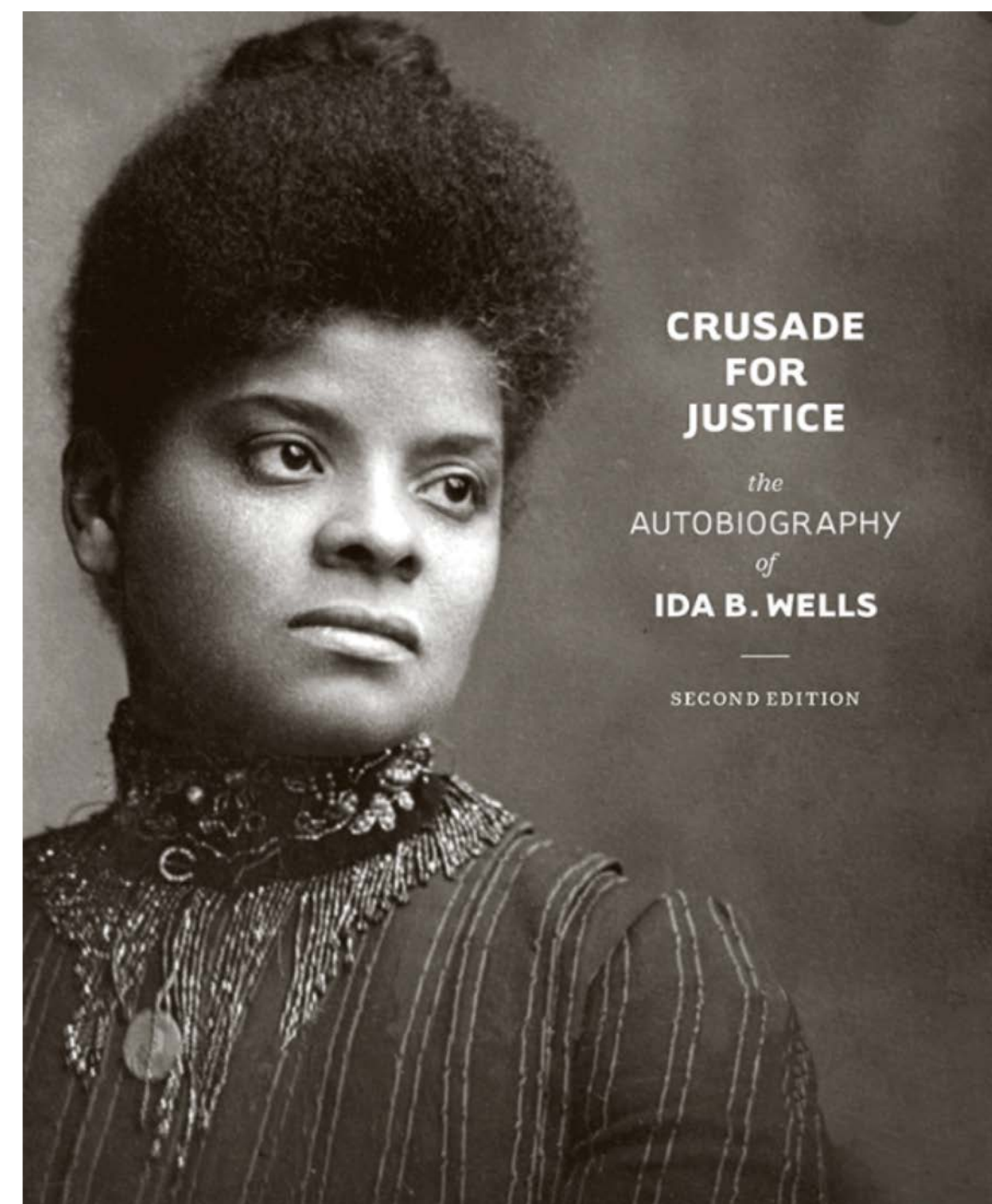
THE ALPHA SUFFRAGE CLUB.

The Alpha Suffrage Club is the first suffrage club organized by Negro women, having been organized January 1, 1913. It is now in the third year of its existence. It has fifteen members, two hundred women. It has fifteen members of election, who have been serving for the past year. It did not have any other political clubs in the city. It meets every Wednesday night at 8 o'clock at the State street, at 8 o'clock. Its office is at 1212 N. Dearborn St. Its president is Mrs. Mary Hill, Second Vice President is Mrs. Mary Hill, Secretary is Miss Laura Beas

EXTRACTS FROM

Mr. Speaker, I am glad to see the intermarriage of the races. The Negroes

Official Program
WOMAN
SUFFRAGE



What do you understand about Ida B Wells as a person and what comes to mind?

What are important attributes or values that should be reflected in the place?

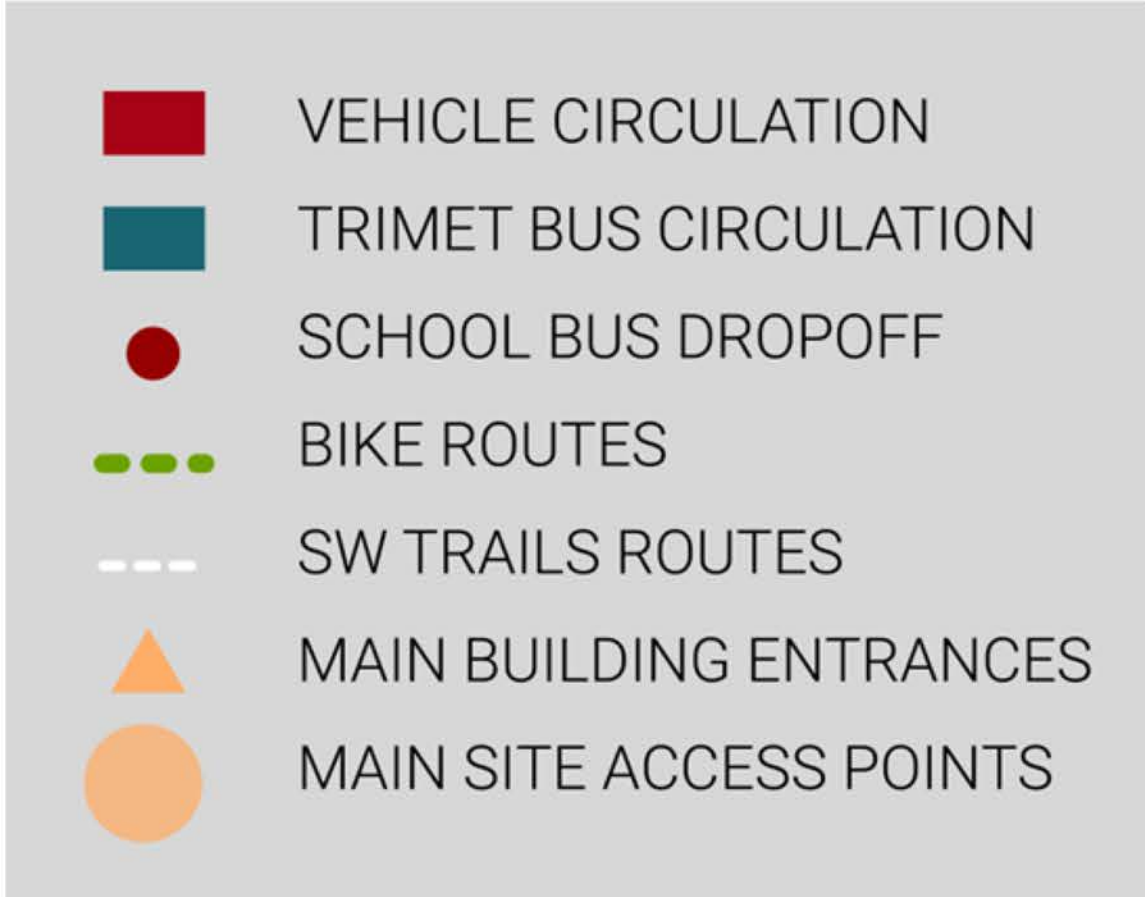
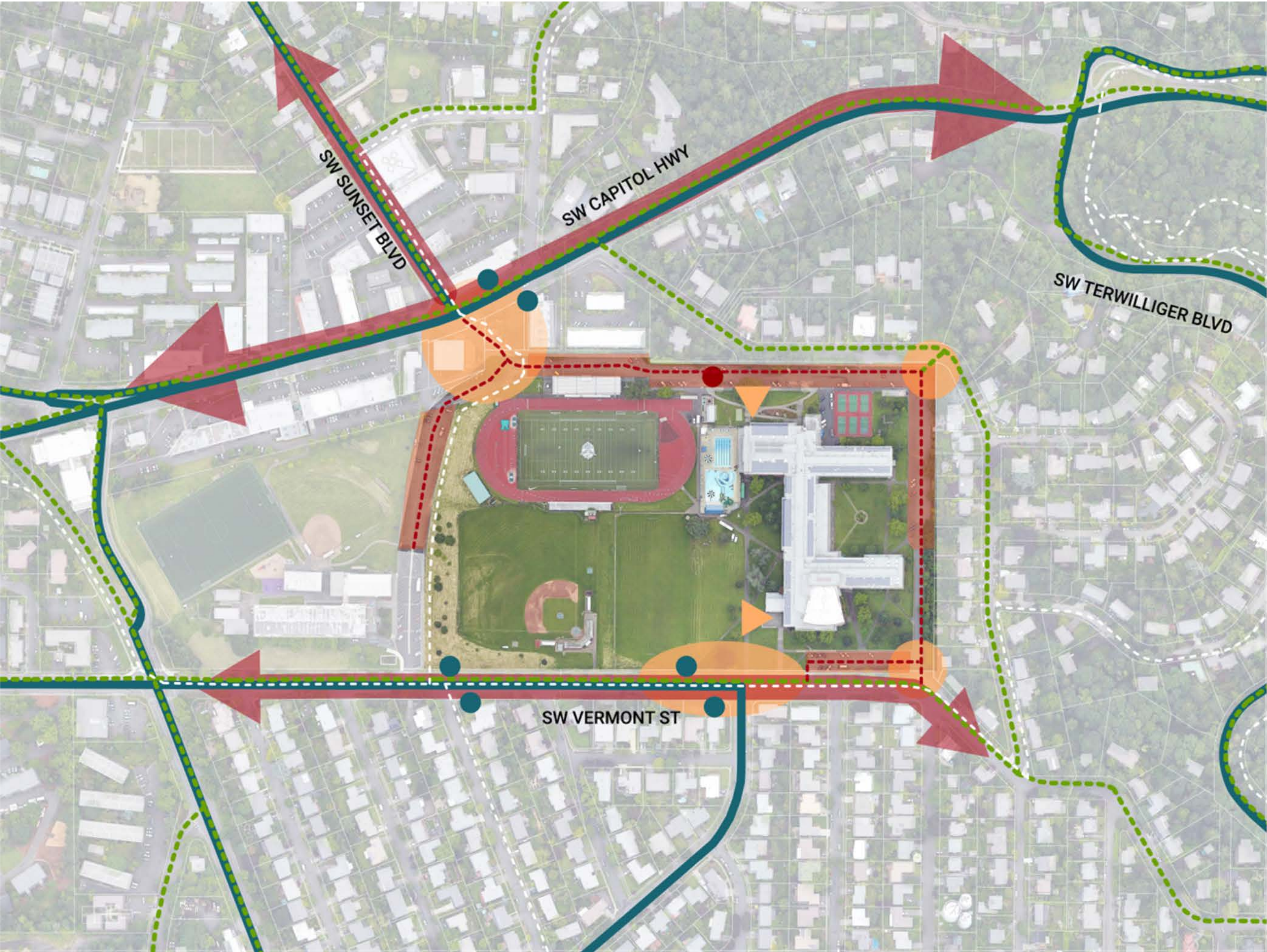


Site Opportunities

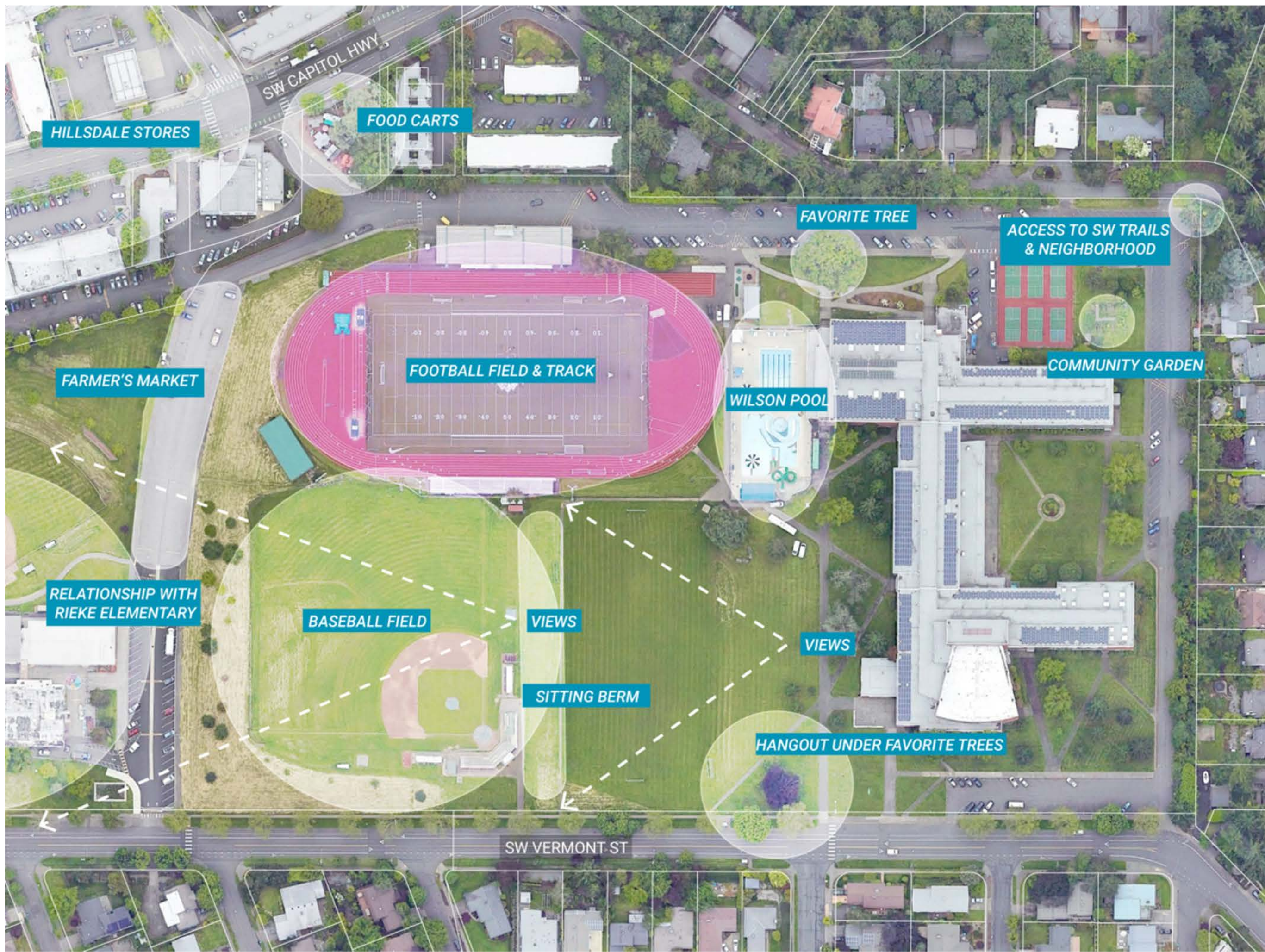




CAMPUS: EXISTING CIRCULATION & SITE ACCESS



CAMPUS: FAVORITE PLACES



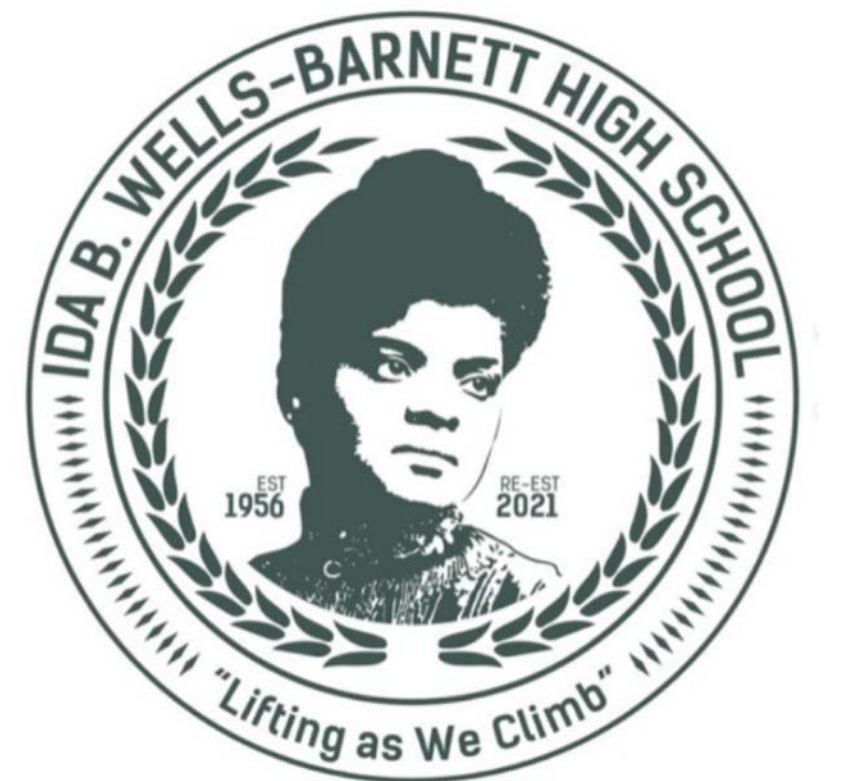
What is a **welcoming** arrival for you?

What about site circulation,
access and arrival is **working**?
and what is **not working**?



CAMPUS: FAVORITE PLACES

What are your
favorite spaces
on the campus?
and **why**?



Ed Spec Review



WHAT IS AN ED SPEC?

It's a list of ingredients.....

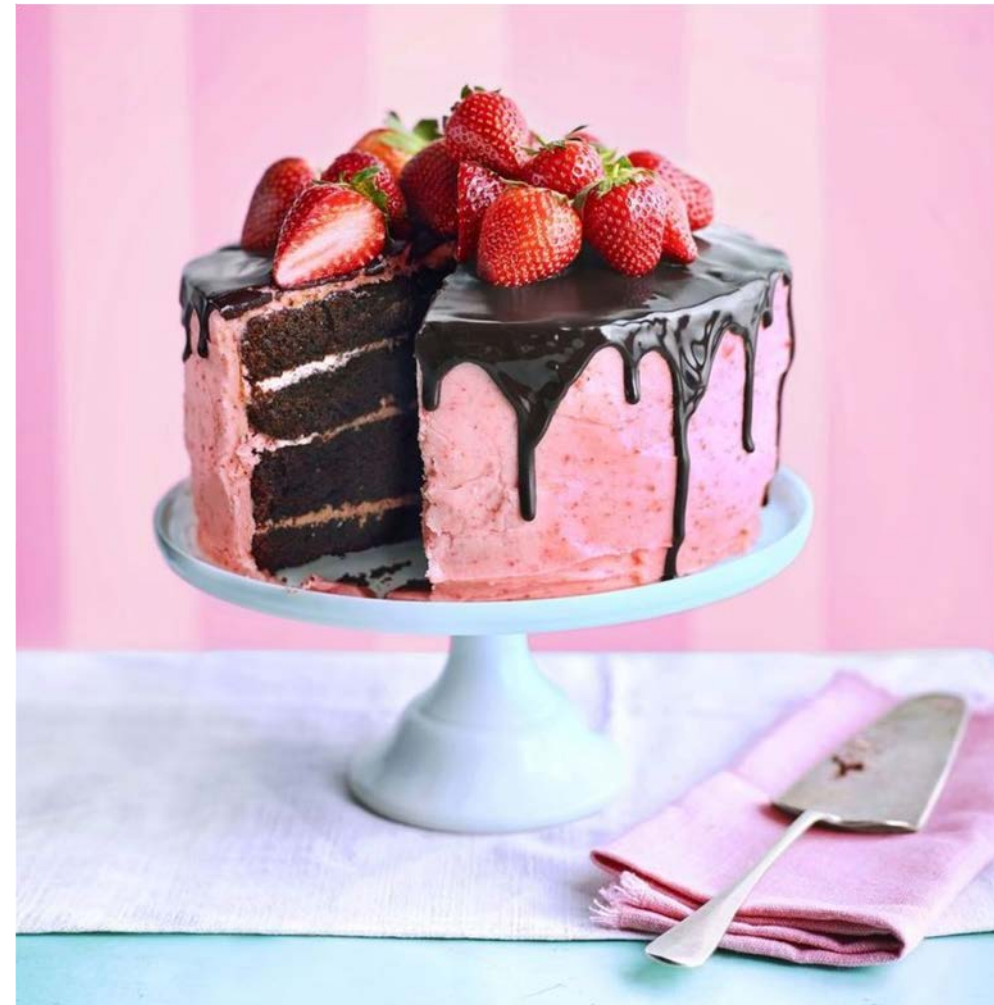


WHAT IS AN ED SPEC?

It's a list of ingredients.....



.....and the outcome will be unique to IBW!



WHAT IS AN ED SPEC?



Education Specifications (Comprehensive High Schools)



Portland Public Schools | Portland, Oregon
Revised September, 2017

PORTLAND PUBLIC SCHOOLS | PORTLAND, OREGON
EDUCATION SPECIFICATIONS (COMPREHENSIVE HIGH SCHOOLS)

INTRODUCTION TO HIGH SCHOOL PLANNING PRINCIPLES

The concept and diagrams presented below are aspirational desires for the design of comprehensive high schools and aspirational and as such are not design requirements. While the modernization of existing buildings will require the modified to fit within existing structures, the concepts of these principles should be incorporated to the greatest extent possible.

SCHOOL "HEART"

High schools should have a recognizable center, a heart, that represents ideals. This place should be accessible by all. It should act like a town square, a social place from which all other functions in the school spring. It should be a place where the school has to offer and celebrate daily, monthly and yearly successes.

VIEWABLE

High schools should be viewable. Activities and programs should be seen from interior and exterior spaces. The facility should feel open and accessible.

LEARNING SUITE

Classrooms should be grouped around a shared commons. Classroom quantities depending on building size, program configuration available space, etc. These grouping should support a wide variety of learning opportunities or possibilities.

PORTLAND PUBLIC SCHOOLS | PORTLAND, OREGON
EDUCATION SPECIFICATIONS (COMPREHENSIVE HIGH SCHOOLS)

PPS Comprehensive High School(s) Area Program

RECOMMENDED	PROPOSED	OPTIONAL	TOTAL RECOMMENDED
Quantity	S.F. Room	Quantity	S.F. Room
CORE PROGRAM			
Career Preparation CTE			
Classrooms	1	1,200	4,800
Specialized classrooms/labs			1,200
Maker Space			6,000
Sub-Total Career Prep CTE			
General Education Classrooms - Core Program Recommendations	11	980	10,780
English	8	980	7,840
Math	8	980	7,840
Social Studies	2	980	1,960
Health	6	980	5,880
World Language	6	980	5,880
Electives	41		40,180
Sub-Total Gen Ed Classrooms			
Specialized Classrooms - Core Program Recommendations	11	1,500	16,500
Science Lab	1	180	180
Chemical Storage	4	200	800
Prep Rooms	11		17,480
Sub-Total Specialized Classrooms			
Smaller Instructional Spaces		10	500
Flexible Learning Areas		8	1,000
Sub-Total Optional			
Sub-Total Recommended Classrooms			
SUB-TOTAL RECOMMENDED: CORE PROGRAM + FLEXIBLE LEARNING + SMALLER INSTRUCTIONAL			
63,660			
76,660			

Notes:

- ¹ Bold Italics text in quantity column indicates teaching station
- ² See "Career Preparation Spaces" and "STE(A)M" for a list of Career Preparation | CTE | STE(A)M spaces. Space devoted to classrooms and/or labs for career preparation above and beyond the area allocated for career preparation needs to be taken from the area for electives.
- ³ See Education support for computer labs, SPED Learning Resource Centers, and ELL classrooms. Programmatic needs for ELL and SPED Resource Centers may also be met in Smaller Instructional Spaces.
- ⁴ Classrooms greater than 1,000 SF require two exits
- ⁵ Advanced classes held in regular classrooms
- ⁶ Assumes general education classrooms could be used all periods. See classroom utilization in Program Development above.
- ⁷ "Electives" include core and non-core program subjects; some electives may require specialized classroom space which will make them unavailable for general education classroom space
- ⁸ Smaller Instructional Spaces and Flexible Learning Areas as defined in room information sheet are optional. HOWEVER, the general requirements, functions, and location as defined in the room information sheet need to be considered during the design process and the spaces (not necessarily the area) provided to meet this function identified in the design. The sub-total area for Core Program + Flexible Learning Areas + Smaller Instructional Spaces needs to be maintained.

REVISED SEPTEMBER, 2017

HIGH SCHOOL PLANNING PRINCIPLES 7

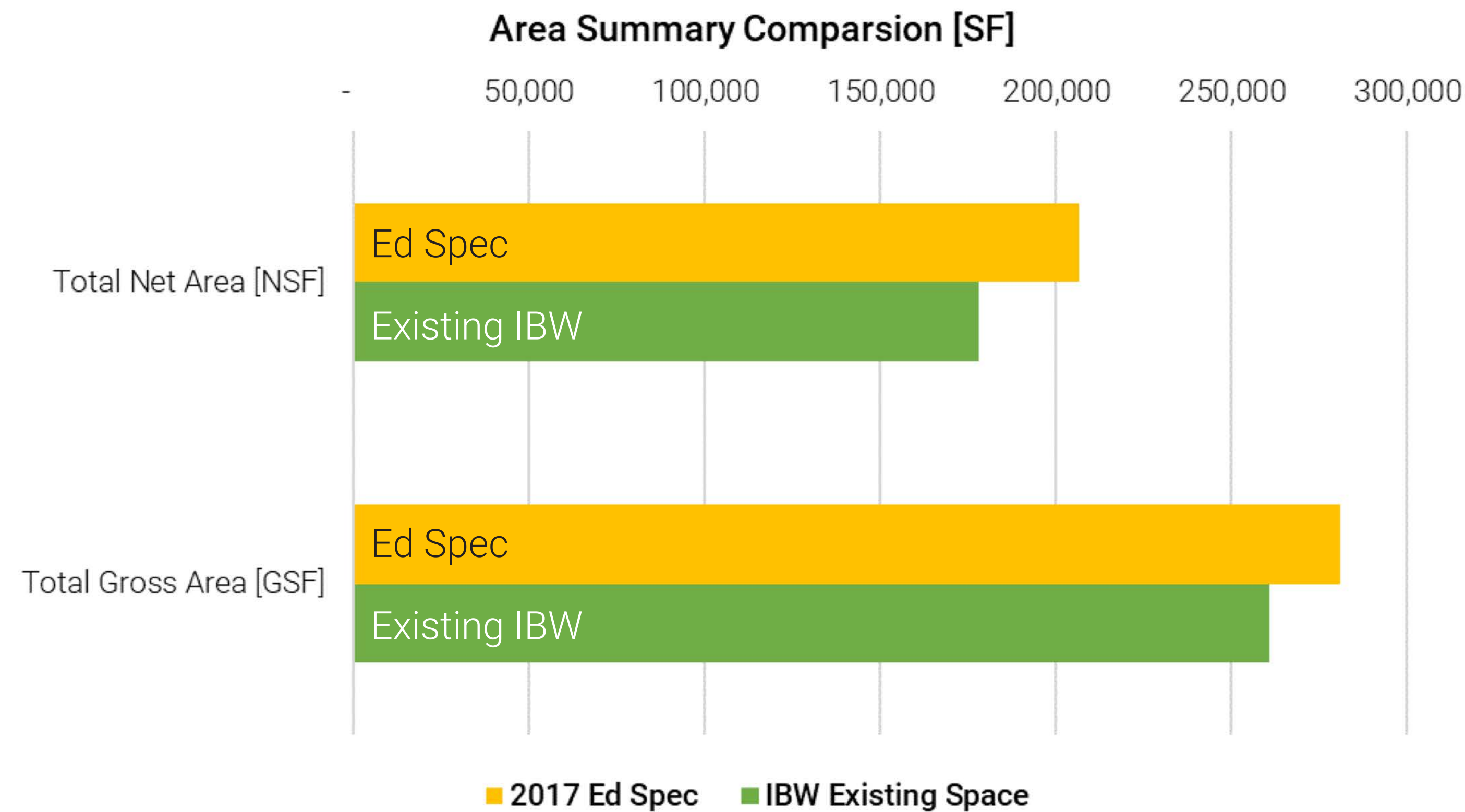
PORTLAND PUBLIC SCHOOLS | PORTLAND, OREGON
EDUCATION SPECIFICATIONS (COMPREHENSIVE HIGH SCHOOLS)

AREA PROGRAM SUMMARY 35

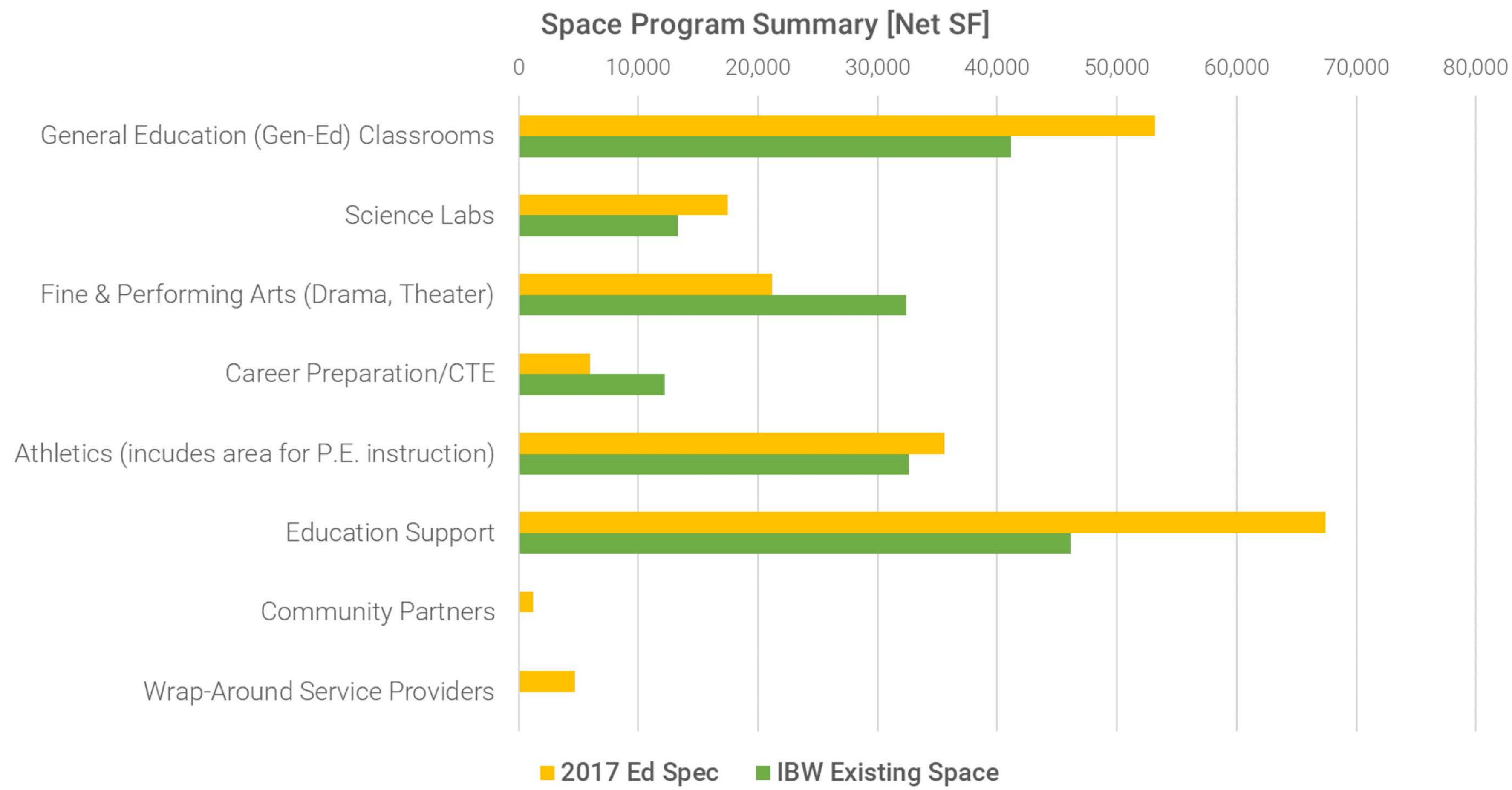
REVISED SEPTEMBER, 2017

Find a link on the IBW Website! [HS Ed Spec](#)

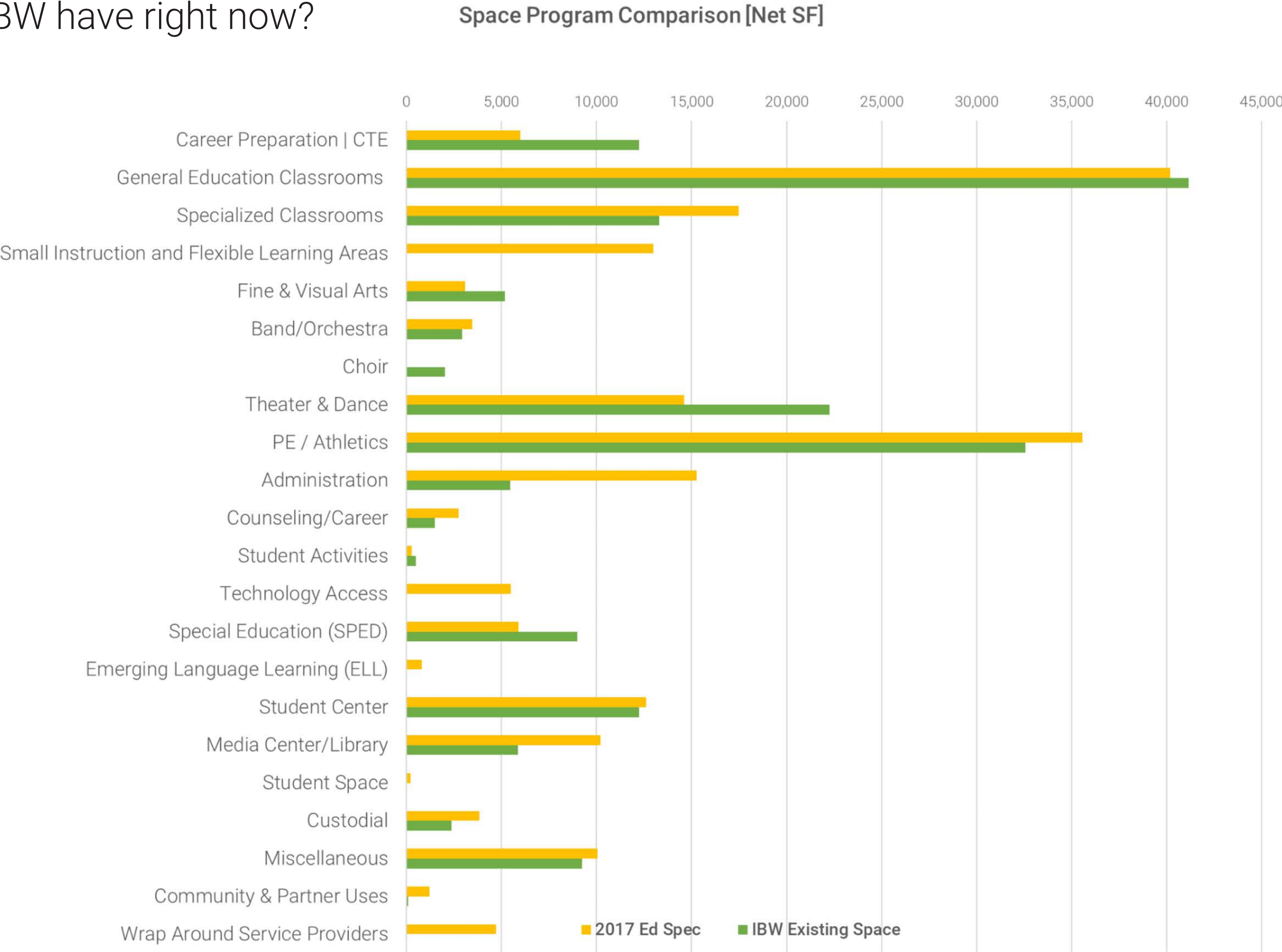
What does IBW have right now?



What does IBW have right now?



What does IBW have right now?



WHAT DOES IBW NEED?



?????

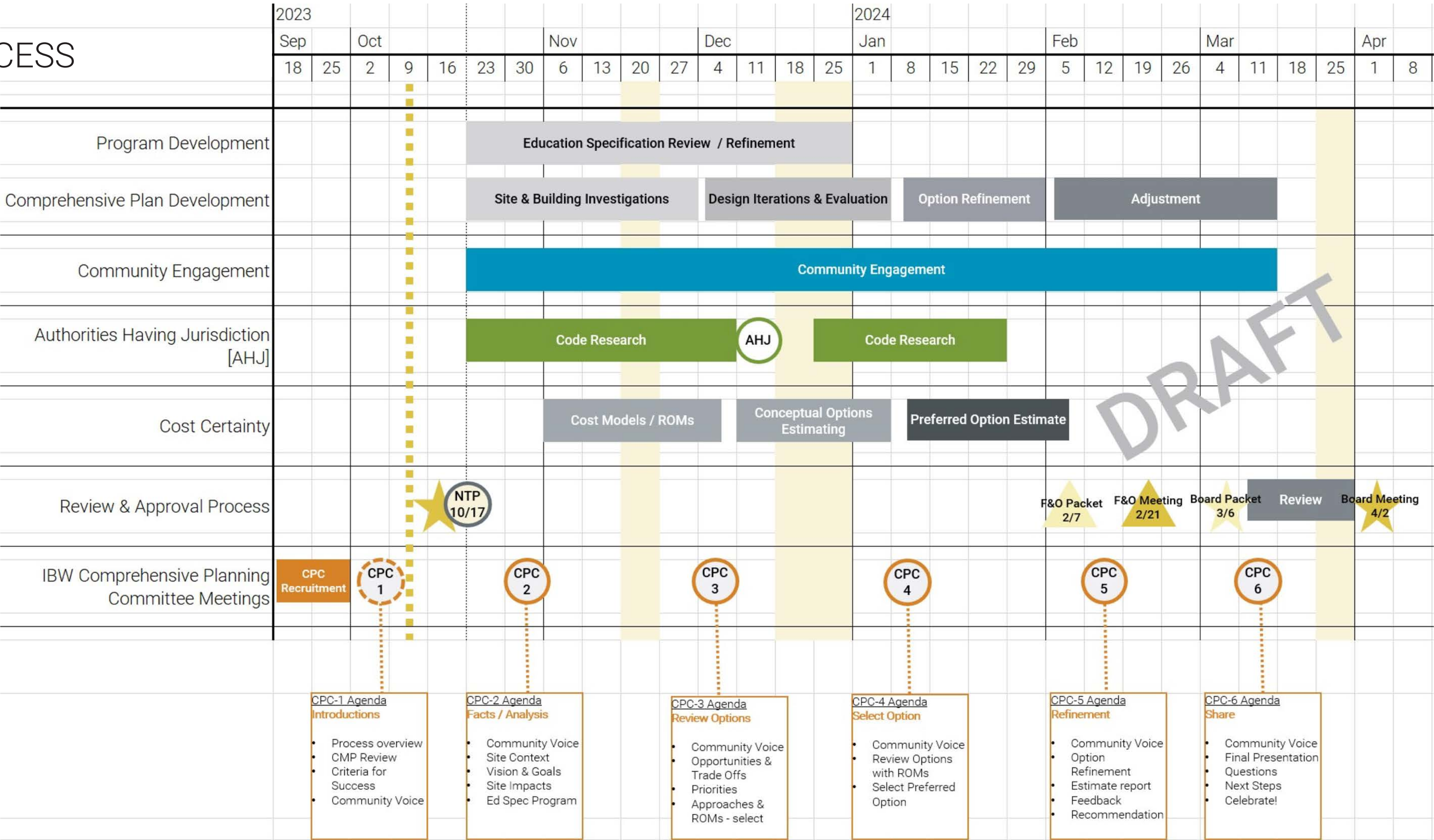
Next Steps



CPC PROCESS

1. Understand **constraints and opportunities**
2. Understand the main **values and goals** that make this project special
3. Determine a direction how the building will **fit on the site** and where
4. Create a massing **concept design** that fits all the pieces
5. Establish a **reasonable budget** for the project moving forward

CPC PROCESS



NEXT STEPS

Community Workshop: 10/29, 1-3pm

- this will continue tonight's conversations with more community
- this is one of two Community Workshops
- please encourage students and families to come!

CPC #3: 12/6, 6-8pm

- we will bring our first set of **design options** to consider **trade offs and priorities**
- we will bring a first draft of **Guiding Principles** based on input on vision and goals
- we will bring a first draft of a **rough cost model***

* this is based on “comparable” projects, size of building and program, and the major site moves

TOURS OF OTHER OTHER PPS MODERNIZATION

Lincoln High School

- joint tour with Cleveland HS modernization team



McDaniel High School

- similar mid-century building
- similar sloped site topography
- renovation, not replacement



Grant High School

- IBW CPC welcome to join CHS CPC tour
- historic renovation, not replacement



TOURS OF OTHER OTHER PPS MODERNIZATION

Lincoln High School

- joint tour with Cleveland HS modernization team

timing?



McDaniel High School

- similar mid-century building
- similar sloped site topography
- renovation, not replacement



Grant High School

- IBW CPC welcome to join CHS CPC tour
- historic renovation, not replacement



Questions?
THANK YOU



The new Ida B Wells High School will be successful if the result is:

Human Experience

- An inviting building that evokes pride and respect
- A school that inspires students to learn
- An anchor for the community where students will thrive for generations to come
- A flexible, forward-thinking design to meet future needs

Community Health, Safety and Belonging

- A healthy, supportive space for students, teachers and staff
- An inclusive space where all students feel a sense of belonging
- A safe place for learning
- A place where teachers feel appreciated and respected
- A place integrated with the neighborhood businesses
- A place that recognizes indigenous culture and people

Site Design

- A landscape plan that considers 10-50yr design
- A design that improves and adds, not subtracts from the existing site
- A site that is welcoming and supporting to a diverse set of students
- A purposeful gathering space for neighborhood special events
- A strong sports facility for students & local sports organizations

Building Design

- A beautiful and timeless design for the neighborhood
- A school that supports learning styles of every kind.
- A visually interesting place with varied environments to support different group sizes
- A seismically safe building
- A performing arts venue with excellent acoustics
- A comfortable place with heating and cooling
- An increase in space for students (library, flex spaces, counseling office, career center)
- A space for community partners.
- A place that considers technology & AI for the future

Sustainability + Health

- Built to last for the next 100 years
- A model example of the district's climate policy
- A school with healthy air, water, materials and light to support wellness
- A place equipped for emergency preparedness.

Financial + Enrollment

- A project on budget and on time while meeting the needs of students + community.
- An increase in enrollment post-construction
- An increase in staff retention and graduation rates
- A process with transparency of costs and tradeoff debates

Process

- A design that capitalizes on lessons learned from previous schools and its students
- A process where voices of community are meaningfully included